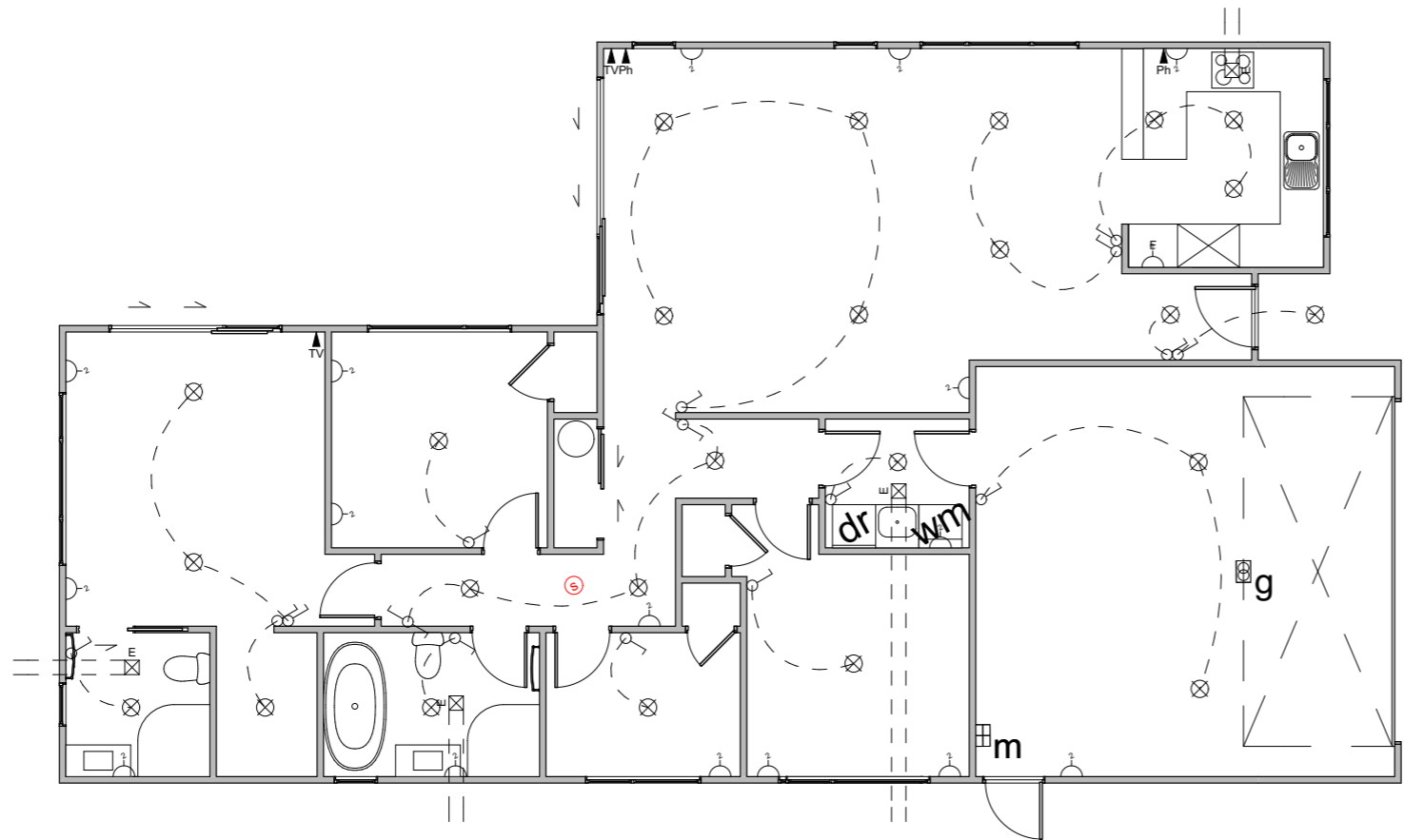


FRANZ JOSEF DESIGN

Floor Area = 157m²

- Cladding 1 = Linea Weatherboards on cavity
- Cladding 2 = Stone on cavity
- Roofing = Corrugated Colorsteel





Electrical Legend




- Light switch
- Two way light switch
- Feature light
- External wall light
- Recessed downlight
- Fluorecent light
- Power point
- Meter box
- Distribution board
- Garage door motor
- Smoke detector
- Extractor fan
- Phone outlet
- Television outlet

SUBTROPICAL

TYPE 1 PLANT SELECTION OPTIONS:

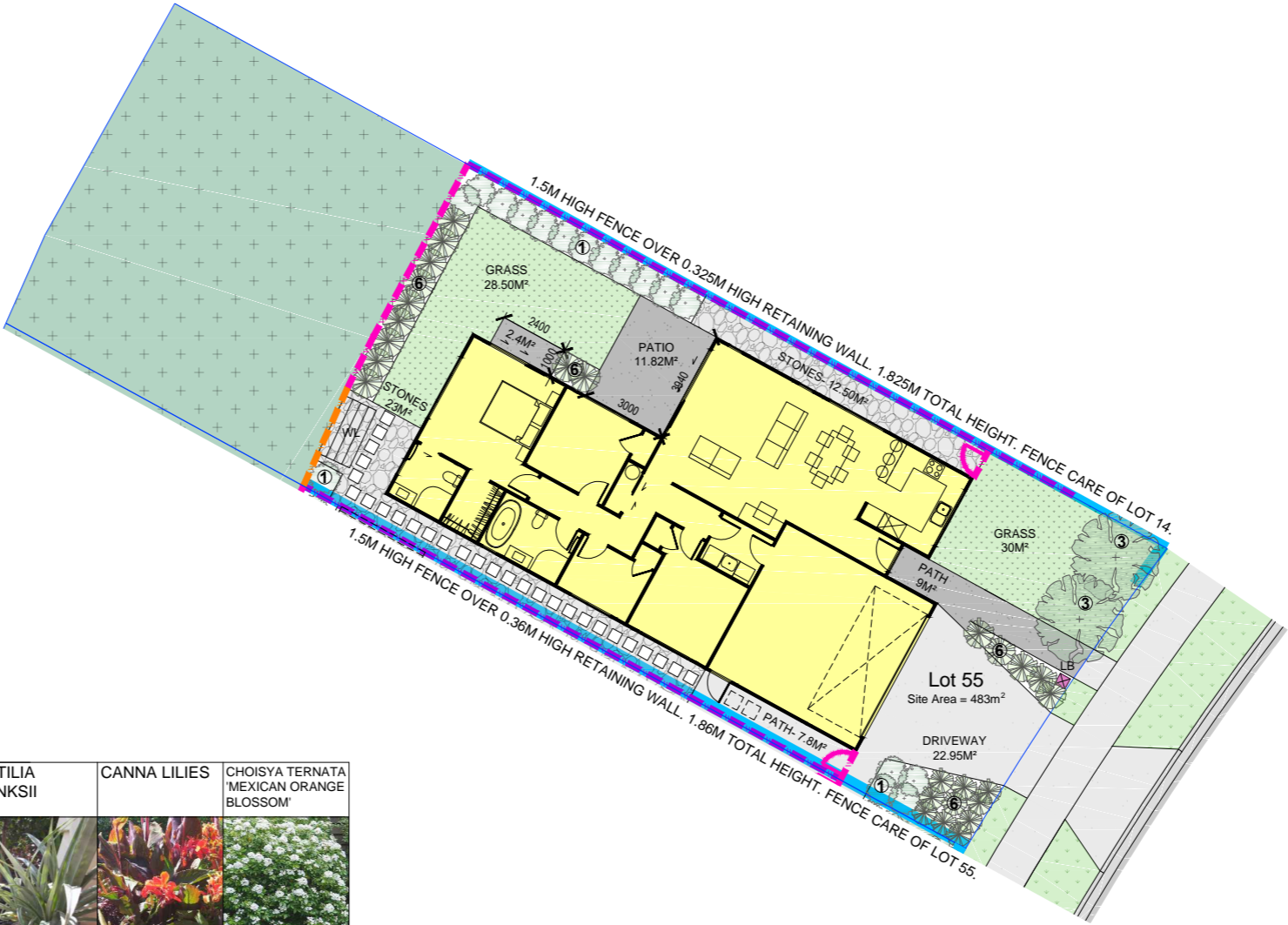
| KEY | DESCRIPTION | AKE AKE | GRISELINIA | PITTOSPORUM |
|-----|---|---|---|---|
| ① | PLANT ATTRIBUTES: - EVERGREEN - HEDGING SELECTION |  |  |  |

TYPE 3 PLANT SELECTION OPTIONS:

| KEY | DESCRIPTION | HOHERIA | KOWHAI | TITOKI |
|-----|--|---|---|---|
| ③ | PLANT ATTRIBUTES: - NZ NATIVE - FEATURE TREE |  |  |  |

TYPE 6 PLANT SELECTION OPTIONS:

| KEY | DESCRIPTION | APODASMIA SIMILIS OIOI | ANEMANTHELE LESSONIANA 'WIND GRASS' | ARTHROPODIUM CIRRATUM 'RENGA RENG' | ASTILIA BANKSII | CANNA LILIES | CHOISYA TERNATA 'MEXICAN ORANGE BLOSSOM' |
|-----|---|---|---|---|--|---|---|
| ⑥ | PLANT ATTRIBUTES: - EVERGREEN - SHRUBS |  |  |  |  |  |  |
| | COROKIA CULTIVARS | FLAX CULTIVARS | CABBAGE TREE | LAVENDER | MUEHLENBECKIA ASTONII | PSEUDOPANAX CULTIVARS | UGNI MOLINAE 'NZ CRANBERRY' |
| |  |  |  |  |  |  |  |

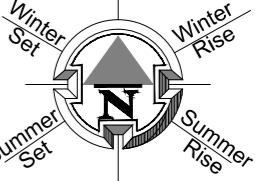


Winter Set







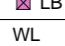






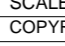
Winter Rise

Summer Set

Summer Rise



LEGEND

| | |
|---|---|
|  | GRASS. HYDROSEED WITH 100MM TOPSOIL. |
|  | BRUSHED FINISH CONCRETE. |
|  | CONCRETE: EXPOSED AGGREGATE FINISH OR COLOURED FINISH OR SAWCUTS AT 0.6M CTRS |
|  | STONES (PERMEABLE) |
|  | STONES (PERMEABLE) WITH FLAGSTONE STEPPING STONES |
|  | INDICATIVE BATTER BANK. REFER SURVEY DOCUMENTS FOR DETAILS. |
|  | SERVICE AREA FOR BINS. |
|  | LETTERBOX |
|  | WASHING LINE |
|  | 1.8M HIGH ROUGH SAWN CLOSED BOARDED TIMBER FENCE. |
|  | 1.8M HIGH OPEN SLAT TIMBER SCREEN. |
|  | 1.5M HIGH HORIZONTAL OPEN SLAT TIMBER FENCE. |
|  | 1.2M HIGH HORIZONTAL OPEN SLAT TIMBER FENCE. |
|  | INDICATIVE RETAINING WALL (REFER ENGINEERS DOCUMENTATION). |

PRINT IN COLOUR

SCALE 1:200 @ A3

COPYRIGHT © HOUSE OF ORANGE DESIGN LTD

LANDSCAPE SCHEDULE OF AREAS:

| | | |
|---------------------|-------|------------|
| SITE AREA: | 484 | M² |
| PERMEABLE AREA: | 273 | M² (56.4%) |
| CONCRETE: | 54 | M² |
| GARDEN: | 32 | M² |
| LAWN: | 58.5 | M² |
| STONES: | 35.5 | M² |
| FENCE RS 1.8M: | 4 | LIN. M |
| SCREEN 1.8M: | - | LIN. M |
| FENCE SLAT 1.5M: | 21.5 | LIN. M |
| FENCE SLAT 1.2M : | 11.2 | LIN. M |
| VEHICULAR CROSSING: | 12.30 | M² |

-FENCE LENGTH INCLUDES GATE. ALL GATES ARE BLACK POWDERCOATED.
- 100X50 H5 GARDEN EDGING.
- ALL RETAINING WALLS, BATTER BANKS, M² AREAS, FENCING HEIGHTS AND LENGTHS ARE SUBJECT TO FINAL FINISHED GROUND LEVEL HEIGHT AND EARTHWORKS PLAN AND ARE SUBJECT TO CHANGE.